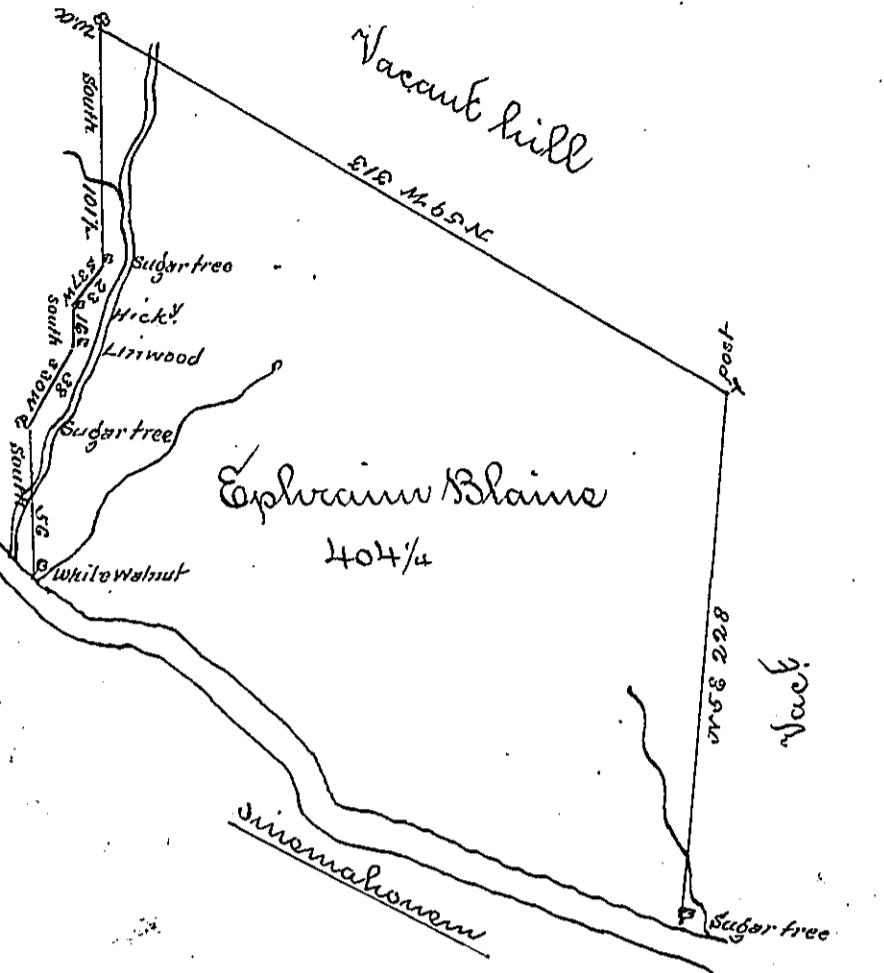


Courses by Distee

South	101.5
S 37 W	23.
South	15
S 30 W	38
South	56
S 34 E	12
S 46 E	21
S 81 E	37
S 49 E	84
S 18 E	21
S 69 E	164
N 5 E	228
N 59 W	313

Down  
Sine  
mahonem



A Draught of a tract of land situate on Sine mahonem in the late purchase Northumberland County containing four hundred & four acres one fourth & the usual allowance of six per cent for roads &c. Surveyed for Ephraim Blaine July 1<sup>st</sup> 1786 in pursuance of a Warrant No 393 - Dated May 17<sup>th</sup> 1785  
 John Lukens Esq. Surv<sup>r</sup> Genl. - Jas Harris D. S.

IN TESTIMONY that the above is a copy of the original remaining on file in the Department of Internal Affairs of Pennsylvania, made conformably to an Act of Assembly approved the 16th day of February, 1833, I have hereunto set my Hand and caused the Seal of said Department to be affixed at Harrisburg, this first day of December 1896

James W. Pitta  
 Secretary of Internal Affairs.